

 **envirolink recycling UK**



www.envirolinkrecycling.co.uk



Rampack 40

Producing bales of 20—40kg



- **Crushes Waste Costs**
- **Reduces Fire Risk**
- **Pro Environmental**

The ‘Mini-Baler’ for everyday use

The R40 is the smallest model in our range for baling Cardboard, Plastic and even General Waste—requiring minimal floor space.

Ideal for: ***Garage Forecourts, Industrial Units, Schools, Restaurants, Pubs, Take-Aways and all Retail Outlets.***

Technical Data

Height: 1.69m
 Width: 0.718m
 Depth: 0.570m
 Weight: 140kg
 Power Supply: 220 volt/13Amp
 Cycle Time: 20 Sec

Noise Certification

This machine is certified at 72 d (B) A. Which adheres to the 1990 noise regulation requirements

Bale Dimensions

Height: 0.550m
 Width: 0.535m
 Depth: 0.450m
 Bale Weight: Up to 40kg
 (Dependent on Material)

www.envirolinkrecycling.co.uk



Rampack 60

Producing bales up to **75kg** bales



Powered from a standard 13 Amp plug and with a larger than average loading aperture (.64 x .70m), the Rampack 60 exerts **MAXIMUM PRESSURE** to produce bales weighing up to 75kg.

This model is ideal for baling both cardboard and plastic as well as dry waste and 20-litre steel drums.

Technical Data

Height: 2.35m
Width: 1.0m
Depth: 585m
Weight: 270kg
Power Supply: 220 volt 1.5kw
Cycle Time: 24Sec

Noise Certification

This machine is certified at 72 d (B) A. Which adheres to the 1990 noise regulation requirements

Bale Dimensions

Height: 1.0m
Width: 0.7m
Depth: 0.50m
Bale Weight: Up to 75kg
(Dependent on Material)

www.envirolinkrecycling.co.uk



Rampack 100

Producing bales up to **150kg** bales



Powered from a standard 13 Amp plug and with a larger than average loading aperture (.64 x .70m), the Rampack 60 exerts **MAXIMUM PRESSURE** to produce bales weighing up to 75kg.

This model is ideal for baling both cardboard and plastic as well as dry waste and 20-litre steel drums.

Technical Data

Height: 2.8m
Width: 1.5m
Depth: 0.98m
Weight: 780kg
Power Supply: 220 volt 1.5kw
Cycle Time: 35 Seconds

Noise Certification

This machine is certified at 72 d (B) A. Which adheres to the 1990 noise regulation requirements

Bale Dimensions

Height: 1.0m
Width: 0.95m
Depth: 0.80m
Bale Weight: Up to 150kg
(Dependent on Material)

www.envirolinkrecycling.co.uk



Rampack 200

HALF MILL-SIZE BALER



Produces 1/2 Mill-Size bales of Circa 250kg

Powered by a 16 Amp single phase plug and with an extra large loading aperture, the Rampack 200 produces HALF MILL-SIZE bales weighing up to 250kg. This TWIN RAM model is ideal for baling medium to high quantities of both CARDBOARD and PLASTIC, maximising return values.

Technical Data

Height: 2.78m (9' 1")
Width: 1.63m (5' 4")
Depth: 1.00m (3' 3")
Weight: 985kg
Power Supply: 220 volt 2.2kw
Single phase
Cycle Time: 45 Seconds

Noise Certification

This machine is certified at 74 d (B) A. Which adheres to the 1990 noise regulation requirements

Bale Dimensions

Height: 1.0m (3' 3")
Width: 1.10m (3' 7")
Depth: 0.80m (2' 7")
Bale Weight: Up 150 / 250kg
(Dependent on Material)

www.envirolinkrecycling.co.uk



Rampack 400

Producing MILL-SIZE Bales



This powerful unit exerts MAXIMUM PRESSURE via it's TWIN RAMS and is capable of turning your recyclable material/s into 'wire-tied' MILL-SIZE BALES of up to 500kg (max) optimising rebate values and greatly reducing waste disposal cost.

Technical Data

Height: 3.00m (9' 10")
 Width: 1.73m (5' 8")
 Depth: 1.00m (3' 3")
 Weight: 1075kg
 Power Supply: 400 volt 11kw
 32 amp 3 phase
 Cycle Time: 45 Seconds

Noise Certification

This machine is certified at 75 d (B) A. Which adheres to the 1990 noise regulation requirements

Transport Height

2.3m

Bale Dimensions

Height: 1.0m (3' 3")
 Width: 1.20m (3' 11")
 Depth: 0.80m (2' 7")
 Bale Weight: Up 400—

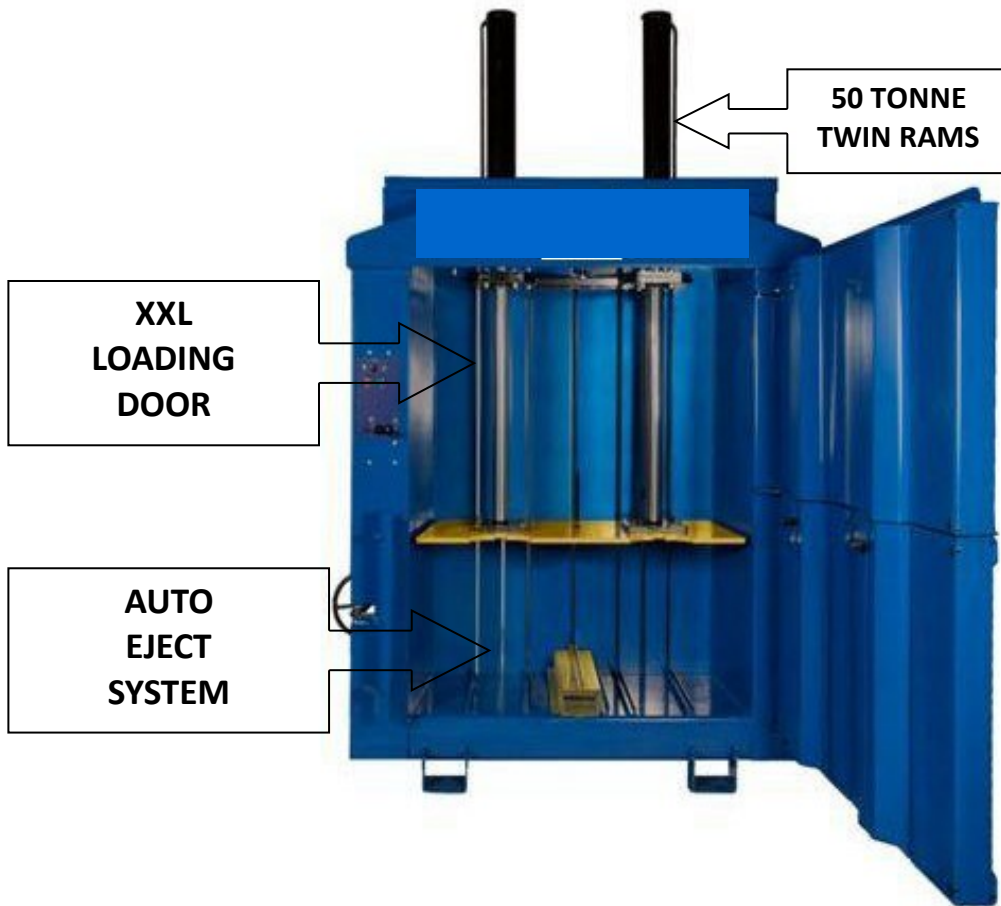
(Dependent on Material)

www.envirolinkrecycling.co.uk



Rampack 500

XXL LOADING APERTURE MILL-SIZE BALER



This RAMPACK 500 has an XXL Loading Aperture allowing fast throughput of voluminous and bulky recyclable materials, turning them in to dense wire-tied MILL SIZE BALES weighing between 500—550kg—achieving the **MAXIMUM** rebate value possible!

Technical Data

Height: 3.30m
Width: 2.1m
Depth: 1.1m
Weight: 1650kg
Power Supply: 400 volt 11kw
32 amp 3 phase
Pressing Force: 50 Tonnes

Noise Certification

This machine is certified at 74 d (B) A. Which adheres to the 1990 noise regulation requirements

Bale Dimensions

Height: 1.2m
Width: 1.5m
Depth: 0.80m
Bale Weight: 500—550kg
(Dependent on Material)

www.envirolinkrecycling.co.uk



Rampack 600

XXL MILL-SIZE BALER



This super **power-**
ful unit exerts **MAXIMUM PRESSURE** on your recyclable materials, turning them into
EXTRA LARGE Mill Size Bales weighing up to **650kg**, increasing rebate values and
greatly reducing waste disposal cost.

Technical Data

Height: 3.30m (10' 10")
Width: 2.10m (6' 10")
Depth: 1.40m (4' 7")
Weight: 2640kg
Power Supply: 400 volt 11kw
32 amp 3 phase
Cycle Time: 55 Seconds

Noise Certification

This machine is certified
at 74 d (B) A. Which adheres
to the 1990 noise
regulation requirements

Transport Height

2.55m

Bale Dimensions

Height: 1.10m (3' 7")
Width: 1.50m (4' 11")
Depth: 1.10m (3' 7")
Bale Weight: Up 650kg
(Dependent on Material)

www.envirolinkrecycling.co.uk



Rampack TC60

Producing up to **75kg** Bales
TWIN CHAMBER BALER



Powered from a standard 13 Amp plug and with **TWO LARGE** loading apertures, the **RAMPACK TC60** exerts **MAXIMUM PRESSURE** to produce bales weighing up to **75kg**. This model can be used for baling **CARDBOARD & PLASTIC WASTE** at the same time. **Ideal for the segregation of materials at source.**

Technical Data

Height: 1978mm
Width: 2050mm
Depth: 820mm
Weight: 562kg
Power Supply: 220 volt 1.5kw

Noise Certification

This machine is certified at 72 d (B) A. Which adheres to the 1990 noise regulation requirements

Bale Dimensions

Height: 1.0m (3' 3")
Width: 0.70m (2' 3")
Depth: 0.50m (1' 8")
Bale Weight: Up 75kg
(Dependent on Material)

Cycle Time: 35 Seconds

www.envirolinkrecycling.co.uk



Rampack 200TC

TWIN OR TRIPLE CHAMBER BALER
Produces bales of circa 200kg



“FILL ONE CHAMBER WHILE THE OTHER COMPACTS”

The RAMPACK 200TC is a powerful twin or Triple chamber baler with extended rams meaning that it can handle high volumes of CARDBOARD & PLASTIC.

FEATURES INCLUDE: Two large baling chambers—Minimal height requirement—twin rams—single phase—waste retaining teeth— automatic bale ejection— competitively priced.

Technical Data

Height: 2.471m
Width: 3.056m
Depth: 1.105m
Weight: 1300kg
Power Supply: 400 volt 2.2kw
16 Amp Single Phase
Cycle Time: 34 Seconds

Noise Certification

This machine is certified at 74 d (B) A. Which adheres to the 1990 noise regulation requirements

Loading Aperture

1.1m x 0.8m

Bale Dimensions

Height: 0.80m
Width: 1.1m
Depth: 0.8m
Bale Weight: +/- 200kg
(Dependent on Material)

www.envirolinkrecycling.co.uk



Rampack HD205

Heavy Duty Drum Crush



This powerful unit will crush 45 gallon / 205 litre steel drums at a ratio of 6—8 into 1, greatly reducing disposal costs and storage space. The drum crusher has a totally enclosed shell for high levels of safety and a 30 litre 'oil collection tray' with a tap connection to prevent any spillage or leakage of residual liquids.

TECHNICAL DATA

Height: 2.52m
Width: 1.19m
Depth: 1m
Weight: 690kg

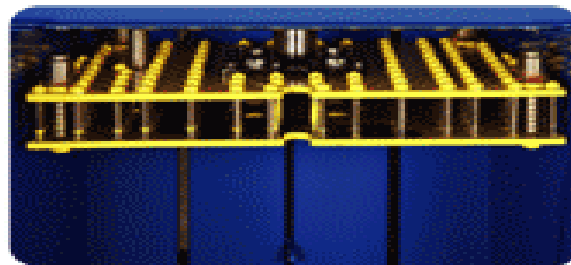
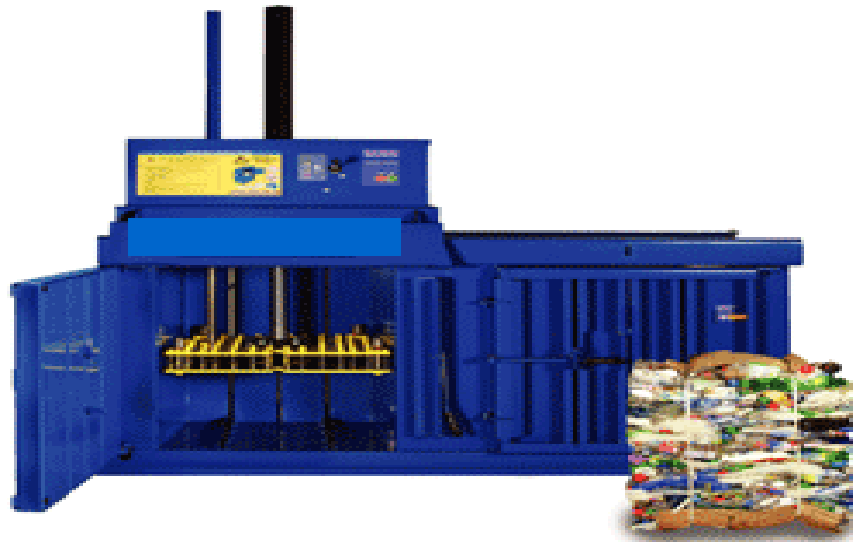
Supply: 3-PHASE / 400v
Motor: 11kw / 32 AMP
Force: 24 Tonnes
Cycle: 40 Seconds

www.envirolinkrecycling.co.uk



Rampack BB60

Twin Chamber Bottle Baler



PIERCING MECHANISM

Our RAMPACK BB60 is a top loading, twin chamber bottle baler that can turn 1,500 plastic bottles into 1 small bale—without the need to remove the caps !

A 30 Litre retention tank with tap connector collects all residual liquid.

Technical Data

Height: 2.55m
Length: 2.05m
Depth: 0.940m
Weight: 562kg
Power Supply: 220 / 240v
Motor: 2.2 kw 16 Amp
Cycle Time: 35 Seconds

Loading Aperture

Height: 0.70m
Length 0.50m
Depth: 0.50m
regulation requirements

Bale Dimensions

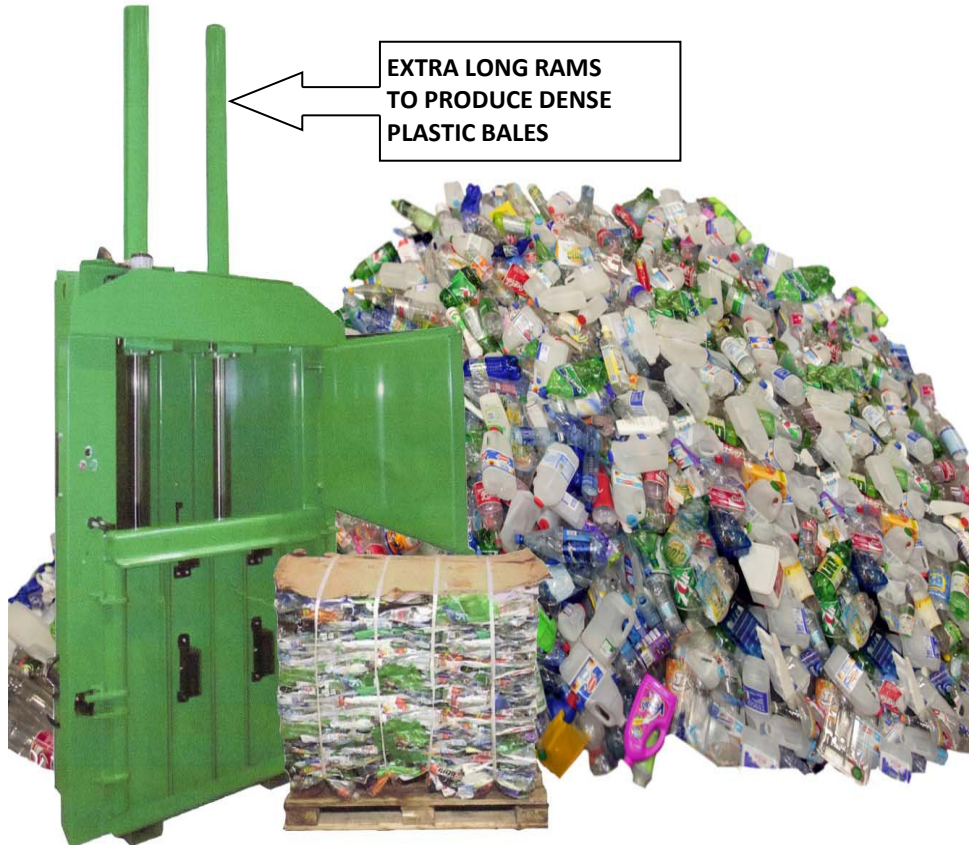
Height: 1.0m
Width: 0.70m
Depth: 0.50m
Bale Weight: circa 40kg
(Dependent on Material)

www.envirolinkrecycling.co.uk



Rampack PB400

Plastic Bottle Baler



This powerful unit exerts **MAXIMUM PRESSURE** via its extra long **TWIN RAMS** combined with extra rows of grippers. The PB400 is cable of turning your empty recyclable **PLASTIC BOTTLES** into dense bales of up to 250kg optimising rebate values and greatly reducing waste disposal costs.

Technical Data

Height: 3.00m
Width: 1.73m
Depth: 1.00m
Weight: 1075g
Power Supply: 400 volt 11kw
32 amp 3 phase
Cycle Time: 45 Seconds

Noise Certification

This machine is certified at 75 d (B) A. Which adheres to the 1990 noise regulation requirements

Bale Dimensions

Height: 1.0m
Width: 1.20m
Depth: 0.80m
Bale Weight: Up to 250kg

www.envirolinkrecycling.co.uk



Rampack SK120

SCREW COMPACTOR
FOR EPS WASTE



From this

to this

to that

The SK120 is a robust, low maintenance machine achieving high compaction ratio's of both wet and dry polystyrene. The simple operation allows the machine to be loaded as the waste is produced. The SK120 is the smallest EPS compactor in our range achieving 25kg per hour compared to the larger SK240 and SK 370 models which have throughputs of 70kg—200kg per hour.

Technical Spec

Overall Length :	2950mm
Loading Height:	1350mm
Overall Width:	500mm
Loading Aperture:	750 x 34mm
Hopper Volume:	0.25 Cubic Metres
Hourly Throughput:	25kg
Power Supply Rating:	3-Phase / 16Amp
Compaction Ratio:	Circa 40:1
Compacted Block Size:	120mm x 120mm

www.envirolinkrecycling.co.uk